

Figure 2: Kaplan Meier survivorship of all cemented THARIES.

Table 1. Percent survival based on the Kaplan Meier Curves for various etiologies.

Etiology	Any Revision Years After Surgery			Femoral Failure Years After Surgery			Acetabular Failure Years After Surgery		
	5	10	12	5	10	12	5	10	12
OA/PT	94	60	41	97	81	70	97	70	55
AVN	82	37	14	86	60	44	93	61	32
DDH	80	31	21	92	77	66	87	41	32
RA	90	49	31	90	71	61	95	62	45
OTHER	74	15	4	91	60	45	80	24	8

Since the OA patients tended to be older and the other patients tended to be younger a comparison was made between the different etiologies based on patients younger than 50 years at surgery. There was a significant difference between the etiologies ($p=0.011$ Logrank test) and the 10 year estimated survivorships were: osteoarthritis 51%, osteonecrosis 33%, developmental dysplasia 28%, rheumatoid disease 50%, and other 11% (which included the most difficult diagnostic category failure of surface replacements).

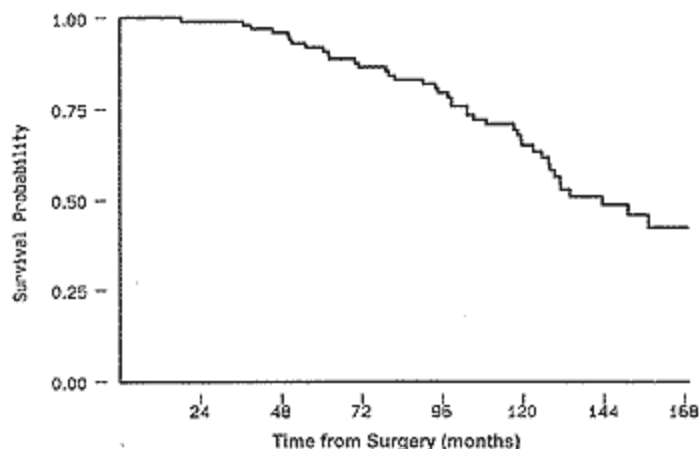


Figure 3: THARIES survivorship curve of osteoarthritic males.